

Air Pollution Scavenger Hunt

Instructions: Your task is to locate as many sources of pollution around your home and neighborhood as you can. Try to correct the problem if you can (like unplugging an unused appliance), and you'll be a Clean Air Action hero too! Good luck!

Sources of Air Pollution

Automotive

- Gasoline fumes
- Tailpipe emissions
- Cars idling their engines (waiting to pick someone up, etc.)

Household Sources

- Paints and paint removers
- Aerosol sprays
- Cleansers and disinfectants
- Moth repellents and air fresheners
- Stored fuels and automotive products
- Dry-cleaned clothing
- Pesticide
- Office equipment, such as copiers and printers
- Craft materials, including glues and permanent markers
- Appliances that are plugged in, especially those not being used (cell phone chargers, etc.) and inefficient appliances

Other Sources

- Smokestacks
- Factories
- Power Plants
- Lawn Mowers
- Fires (burning trash or yard waste, treated wood, etc.)
- Construction sites
- Roads (paved or unpaved)
- Fields

Air Quality Bingo

Decide who will be the caller. Everyone else (the players) should make a bingo card by printing/drawing a grid which is 4 squares by 4 squares and write one of the terms in the list below in each square. The caller should read one of the definitions, next to the words, and then put a tick next to it so they know it has been called. Players cross the matching term off on their bingo sheet. Keep playing until one player has crossed off four squares in a straight line (across, down, or diagonally), they are the winner! They should read back the words they have crossed off so the caller can check they had the right definitions.

Gasoline

Used as fuel for engines. When burned, it causes air pollution.

Asthma

A health condition that affects some people, making it harder for them to breathe.

Particulates

Tiny pieces of dust, soot, and liquid in the air, which are too small to see.

Pollutants

The introduction of harmful materials to the environment. Carbon monoxide is an example of this.

Atmosphere

Another name for the air around you.

Air Quality

A measure of how clean or dirty the air in a certain area is.

Contaminated

How air which contains pollution could be described.

Breathe

What we do every few seconds to get air into our lungs.

Carpool

An arrangement between people to travel to the same place in a single vehicle.

Ozone

An odorless, colorless gas made up of three oxygen molecules and is a natural part of the environment.

Non-motorized Transportation

Also known as active transportation or human-powered means of transportation.

Oxygen

Makes up about 21 percent of the earth's atmosphere and is needed by humans and animals to live.

Air Quality Index

Used for reporting daily air quality levels.

Smog

Fog or haze combined with smoke and other atmospheric pollutants.

Environment

The surroundings or conditions that a person, animal, or plant lives.

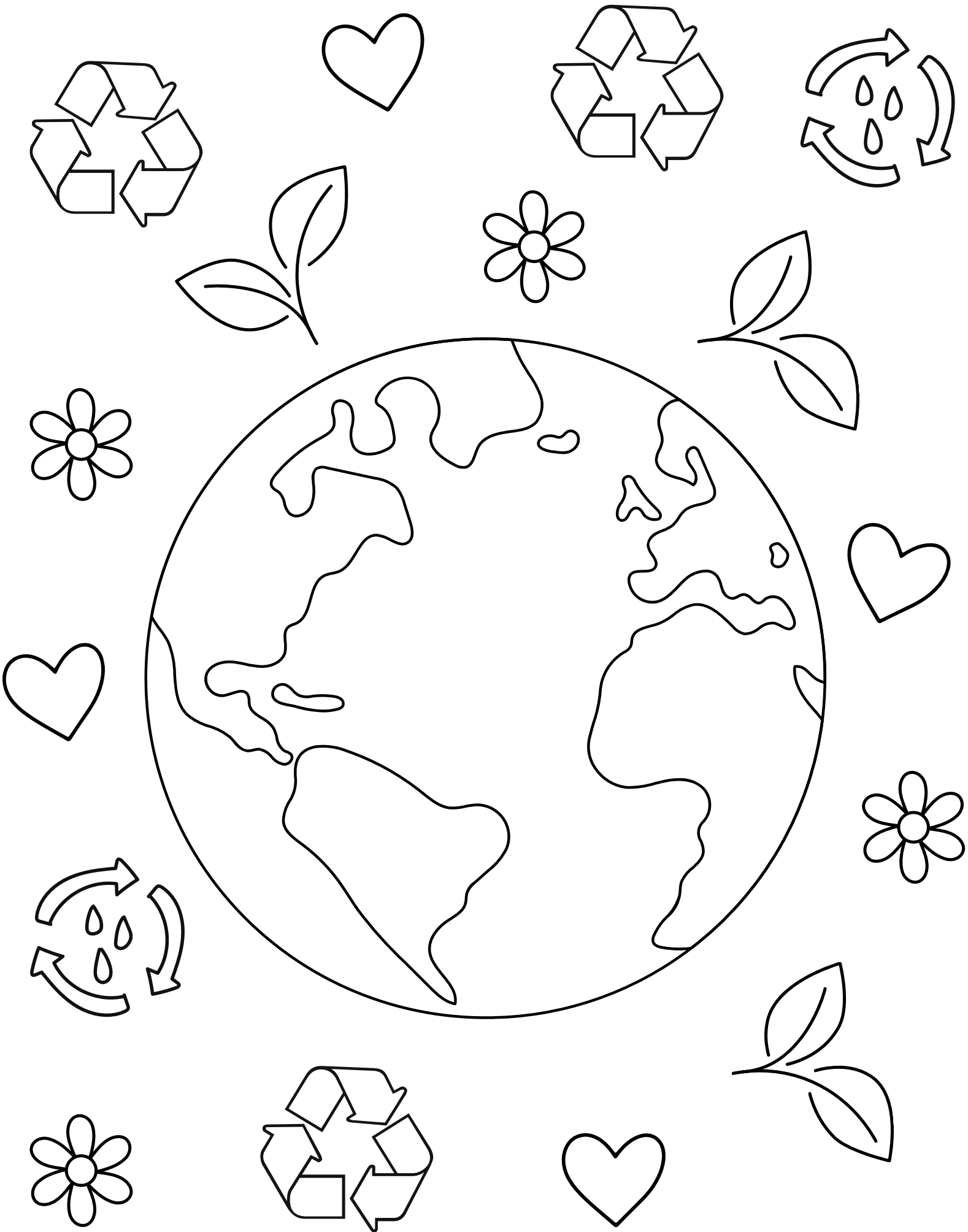
Dust

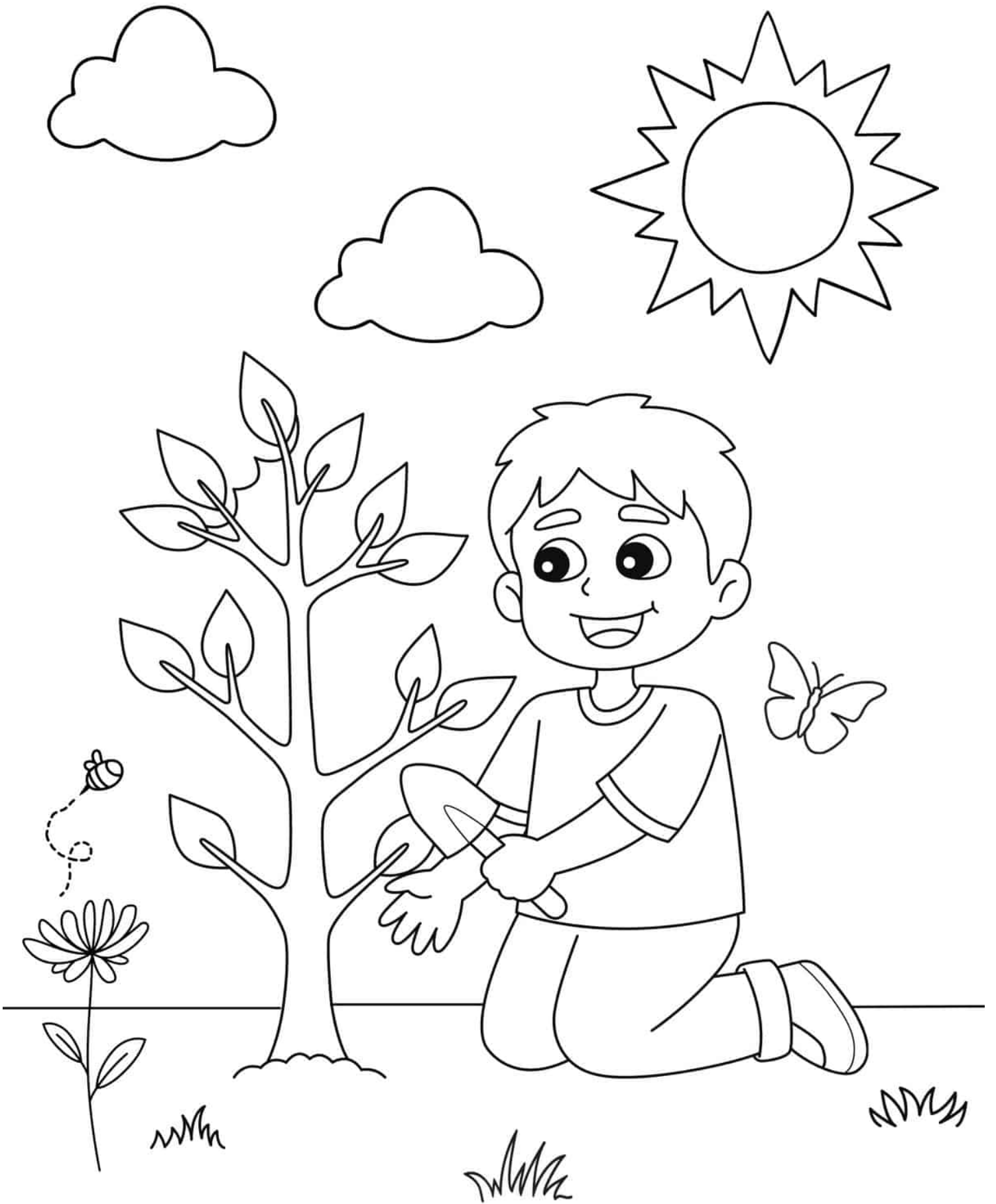
Fine, dry powder consisting of tiny particles of earth or waste matter lying on the ground, on surfaces, or in the air.

Air Quality Bingo

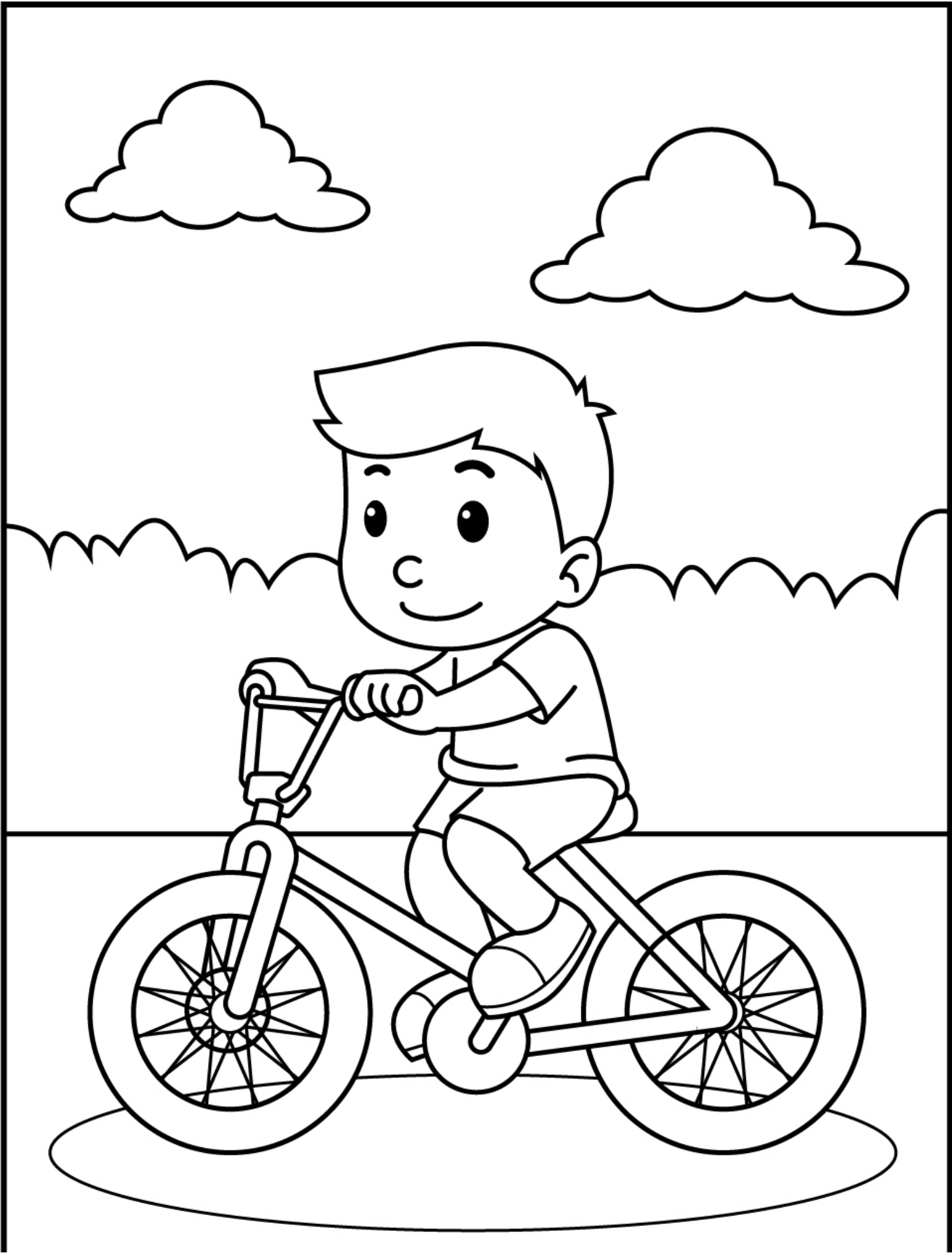
Print this page to use as a blank bingo card.



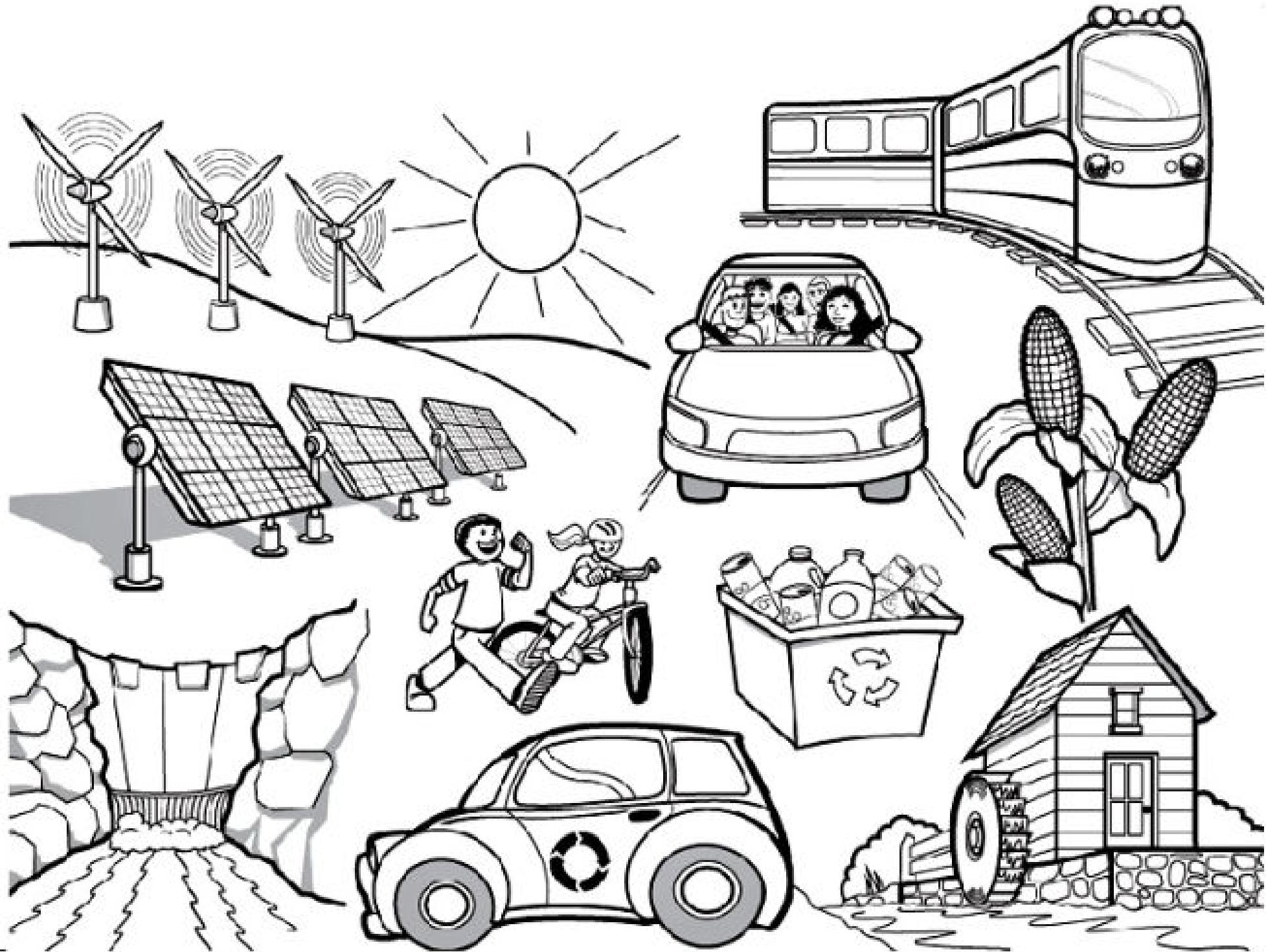












Air Quality Crossword Puzzle

Directions

Fill in the crossword puzzle with your answers to the questions below.

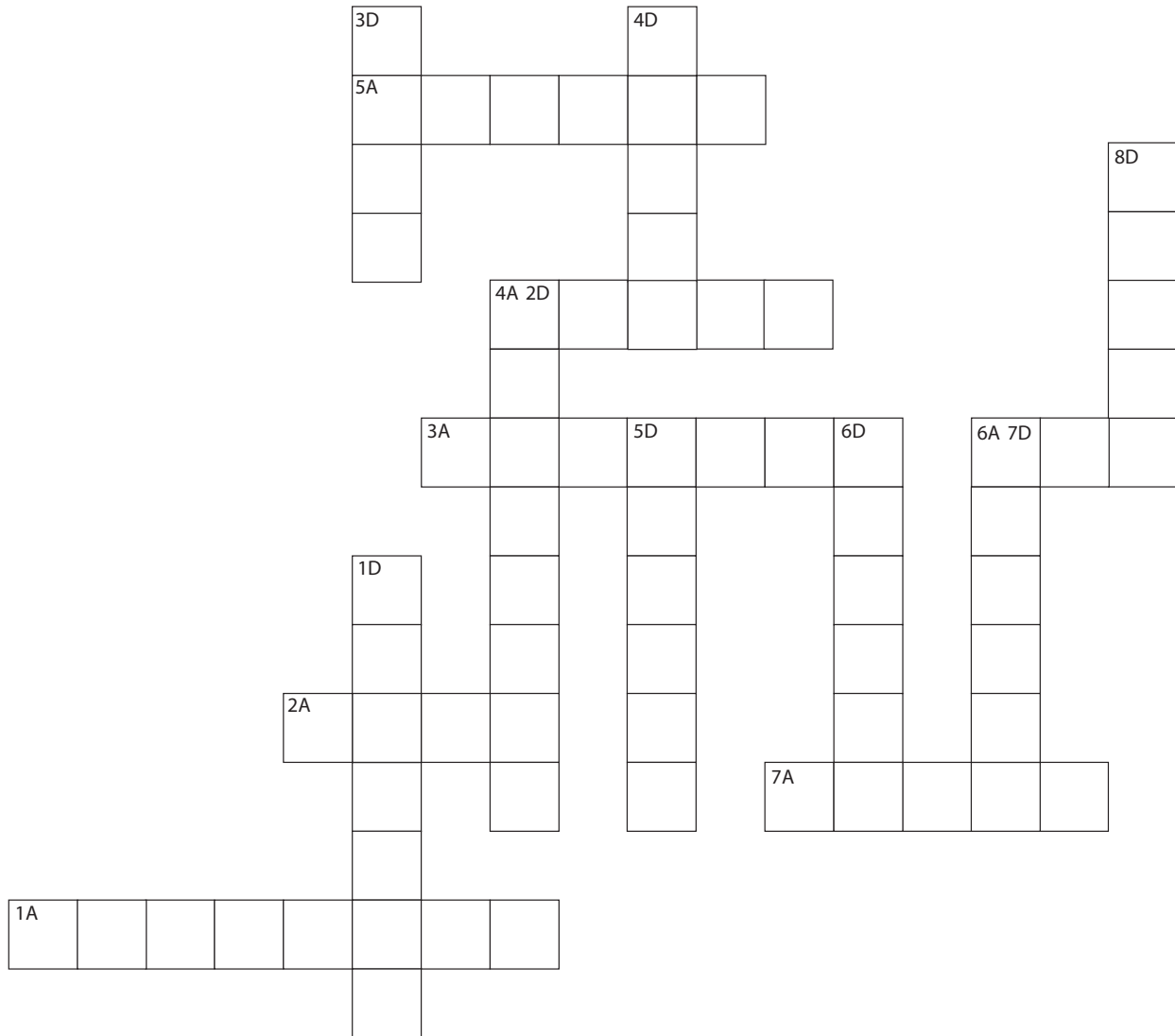
Across

- 1A. What we call the air when it is dirty from things like dust, soot, or chemicals.
- 2A. In addition to power plants and factories, these moving things that take us places can pollute the air.
- 3A. Tell an adult if you find it harder to _____ on a day when the air is polluted.
- 4A. Forest _____ can pollute the air.
- 5A. The name of the Web site where the AQI can be found.
- 6A. We need to breathe _____ to live.
- 7A. The AQI color that means the air quality is "good."

Down

- 1D. "AQI" is an acronym for the Air _____ Index.
- 2D. You might hear about the AQI on the TV, or see it in the newspaper, as part of the weather _____.
- 3D. You might want to do this instead of run on days when the air is polluted.
- 4D. If possible, find out what _____ the AQI is for today and tomorrow.
- 5D. Air pollution can make this breathing problem worse.
- 6D. Take it _____ when you're outside when the air is polluted.
- 7D. We breathe faster and more deeply when we're _____ than when we're resting.
- 8D. Most of the time, when the air is not polluted, it is _____.

Air Quality Crossword Puzzle



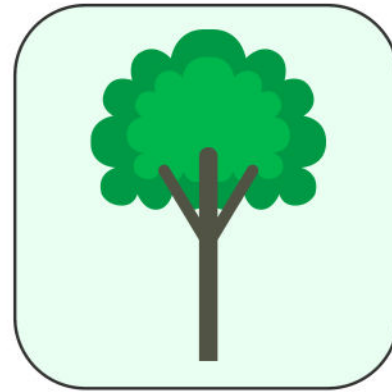
Air Quality Matching Game Instructions

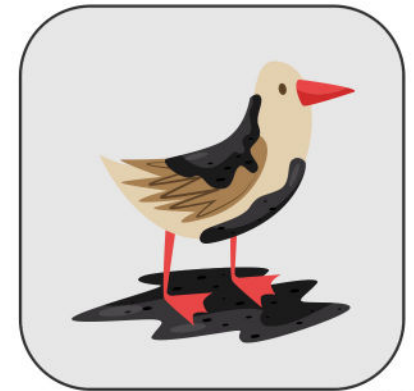
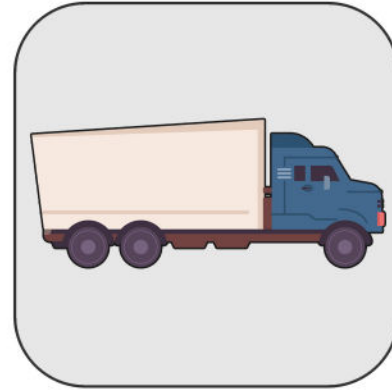
To play the matching game, print the activity sheets and cut out the game cards, laminate if possible. Mix all the cards together and ask a child to take them one by one and figure out if it should go in the polluted city or the clean city based on the image on the card. This activity is a great occasion to explain to a child the importance of unpolluted air and a clean environment.

Source: www.wunderkiddy.com



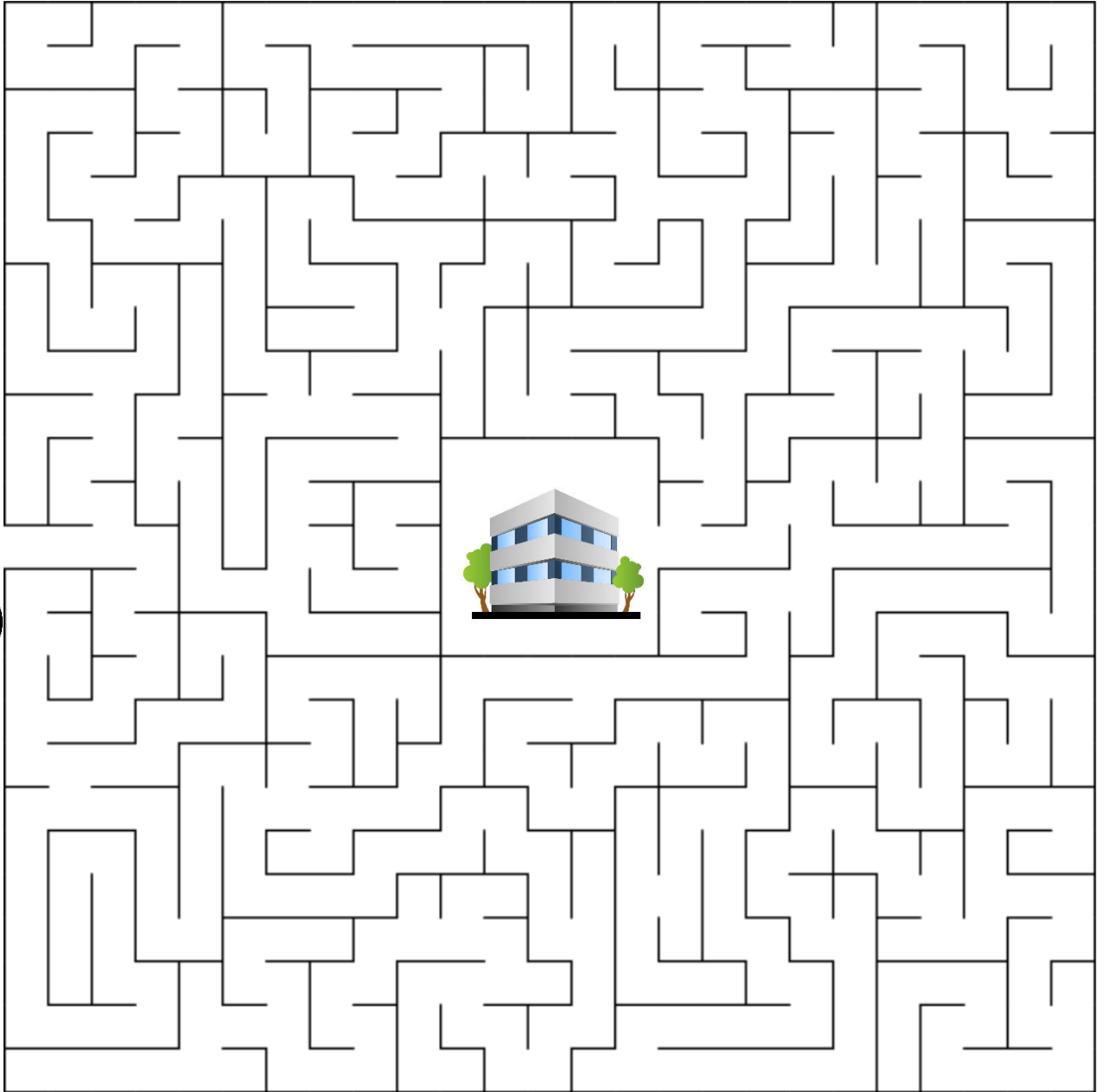
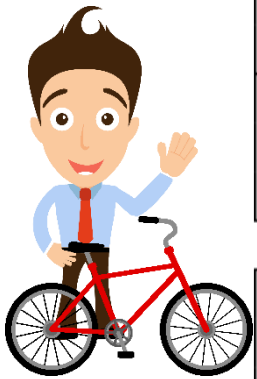






Air Quality Maze

Thomas wants to ride his bike to work instead of using his car to reduce the amount of pollution he generates from gas emissions. Help Thomas find his way to work using this environmentally friendly mode of transportation.



Name: _____

Date: _____

Air Quality Word Scramble

Please unscramble the words below.

1. eotshmeApr _____

Hint: Gases that surround the earth.

2. luaePticart tetrMa _____

Hint: Tiny pieces of solids or liquids that are in the air.

3. oCnrba idoeMoxn _____

Hint: Is a gas that has no odor, taste, or color. Burning fuels make this gas, also known as CO.

4. luolinPto _____

Hint: The introduction of harmful materials into the environment.

5. bweRanlee eEnyrg _____

Hint: Energy derived from natural sources that are replenished at a higher rate than they are consumed.

6. rdaHoszau esWat _____

Hint: A material with properties that make it dangerous or capable of having a harmful effect on human health or the environment.

7. ehWatre _____

Hint: The state of the air and atmosphere at a particular time and place.

8. tHlahe cfsEfet _____

Hint: Changes in health resulting from exposure to a source.

9. rvnoeiEnntm _____

Hint: The surroundings or conditions that a person, animal, or plant lives.

10. eRleccy _____

Hint: Converting waste into a new, useable material.

11. klaW _____

Hint: Traveling on foot.

12. oCbnar ortoFntip _____

Hint: The amount of carbon dioxide emitted by a person.

13. zOeon _____

Hint: An odorless, colorless gas made up of three oxygen molecules and is a natural part of the environment.

14. iAr ntAcio ayD _____

Hint: Called when the air quality index gets into an unhealthy range.

15. rAi tiuQaly _____

Hint: The degree to which the air in a certain place is pollution-free.

16. prCooal _____

Hint: An arrangement between people to travel to the same place in a single vehicle.

17. ieBk _____

Hint: A wheeled vehicle that is moved by foot pedals.

18. sglreilAe _____

Hint: When a person reacts to substances in the environment that are usually harmless to most people.

19. iaeRrsdhe _____

Hint: An arrangement to travel in a group made through a website or app.

20. oSkme _____

Hint: Emitted from burning materials.

Answer Key:

- | | |
|-----------------------|----------------------|
| 1. Atmosphere | 11. Walk |
| 2. Particulate Matter | 12. Carbon Footprint |
| 3. Carbon Monoxide | 13. Ozone |
| 4. Pollution | 14. Air Action Day |
| 5. Renewable Energy | 15. Air Quality |
| 6. Hazardous Waste | 16. Carpool |
| 7. Weather | 17. Bike |
| 8. Health Effects | 18. Allergies |
| 9. Environment | 19. Rideshare |
| 10. Recycle | 20. Smoke |

Name: _____

Air Quality Word Search

A L L E R G I E S K U B I K E Q J S
P A R T I C U L A T E M A T T E R J
C A R B O N M O N O X I D E E C N P
W H J W J J C W R E C Y C L E A J G
A I R Q U A L I T Y M R P G Z R I V
L S M O K E V Z Z A M X L X M P C O
K T A T M O S P H E R E M N D O N Z
F M K E N V I R O N M E N T U O H O
P X O P O L L U T I O N Q I S L O N
U W K R Z X I X R I D E S H A R E E
H E A L T H E F F E C T S C T J I Q
J F Y H N A I R A C T I O N D A Y F

Find the following words in the puzzle.

Words are hidden → ↓ and ↘ .

AIR ACTION DAY

AIR QUALITY

ALLERGIES

ATMOSPHERE

BIKE

CARBON MONOXIDE

CARPOOL

ENVIRONMENT

HEALTH EFFECTS

OZONE

PARTICULATE MATTER

POLLUTION

RECYCLE

RIDESHARE

SMOKE

WALK

SOLUTION

Air Quality Word Search

A L L E R G I E S . . B I K E . . .
P A R T I C U L A T E M A T T E R .
C A R B O N M O N O X I D E . C . .
W R E C Y C L E A . .
A I R Q U A L I T Y R . .
L S M O K E P . O
K . A T M O S P H E R E . . . O . Z
. . . E N V I R O N M E N T . O . O
. . . P O L L U T I O N . . . L . N
. R I D E S H A R E E
H E A L T H E F F E C T S
. A I R A C T I O N D A Y .

Word directions and start points are formatted: (Direction, X, Y)

AIR ACTION DAY (E,3,6)

AIR QUALITY (E,6,7)

ALLERGIES (E,2,10)

ATMOSPHERE (E,4,11)

BIKE (S,1,6)

CARBON MONOXIDE (E,3,2)

CARPOOL (E,11,5)

ENVIRONMENT (E,3,12)

HEALTH EFFECTS (E,2,9)

OZONE (E,4,8)

PARTICULATE MATTER (E,1,4)

POLLUTION (E,2,3)

RECYCLE (E,11,8)

RIDESHARE (E,1,5)

SMOKE (E,10,10)

WALK (E,13,1)