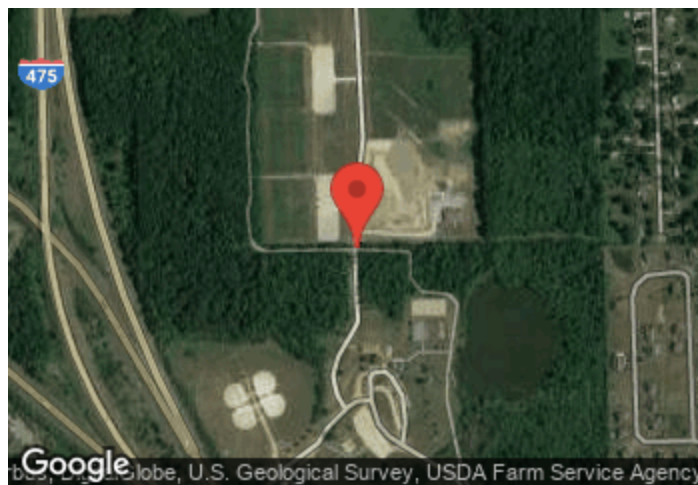


Bicentennial Bike Path

Period Analyzed: Friday, June 08, 2018 to Monday, July 30, 2018



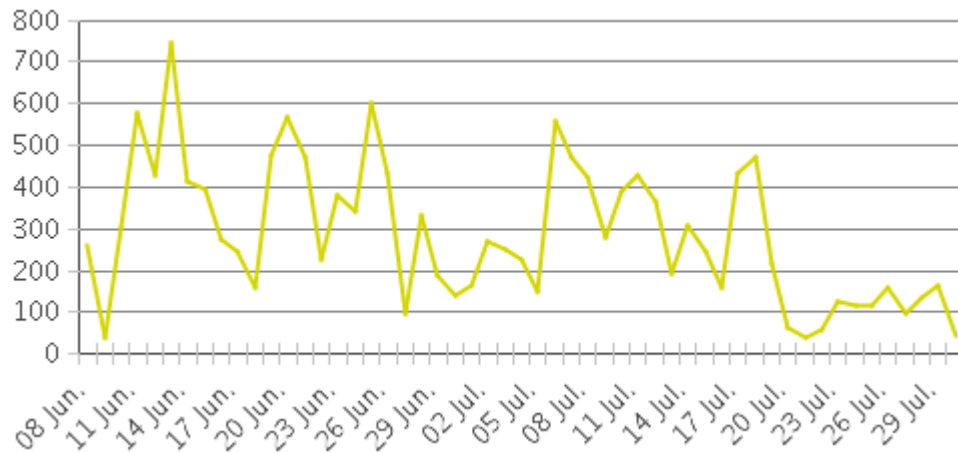
Key Figures

- Total Traffic for the Period Analyzed: 15,214
- Daily Average: 287
Weekdays: 310 / Weekend days: 234
- Busiest Day of the Week: Wednesday
- Busiest Days of the Period Analyzed:
 1. Wednesday, June 13, 2018 (746)
 2. Monday, June 25, 2018 (601)
 3. Monday, June 11, 2018 (576)

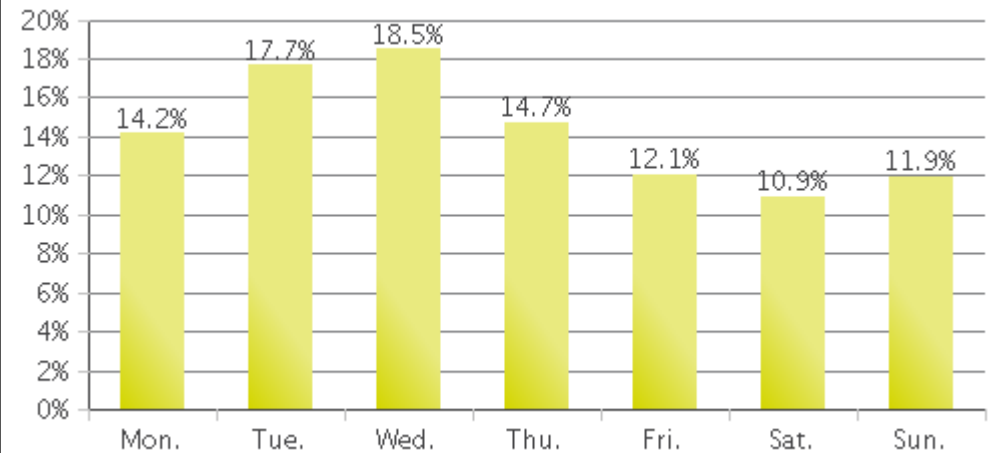
Bicentennial Bike Path

Period Analyzed: Friday, June 08, 2018 to Monday, July 30, 2018

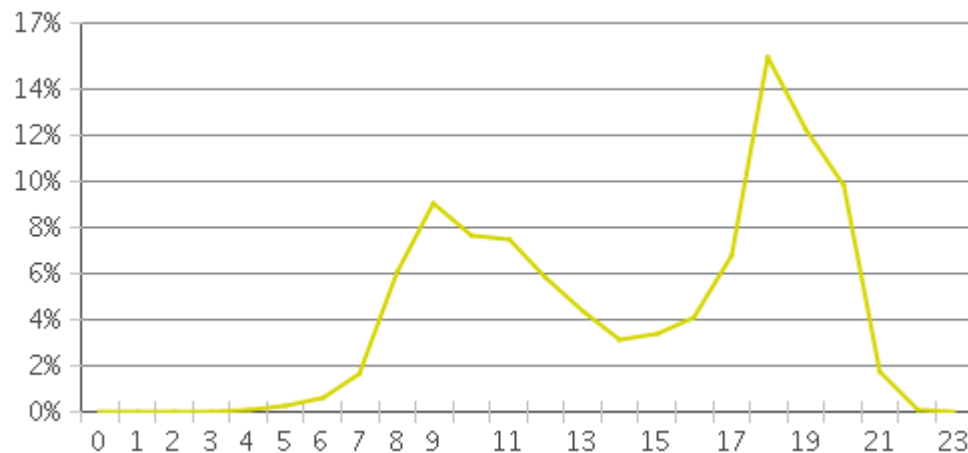
Daily Data



Weekly Profile



Hourly Profile during Weekdays



Hourly Profile during the Weekend

